



School Mission

Sharing the Journey”

Star of the Sea Catholic Parish School embraces the Australian Catholic Tradition and strives to reach our vision by

- *nurturing spiritual development of all member of our school and parish community*
- *motivating our children to participate and experience success in all aspects of Catholic education.*
- *Supporting our children and their families in the pursuit of equal opportunity*
- *Valuing and strengthening the family atmosphere of our schools*

SCHOOL VISION

Our vision for Star of the Sea School is to provide a quality education within our Australian Catholic tradition where children are happy, motivated and challenged to do their best



STAR OF THE SEA CATHOLIC PRIMARY SCHOOL

HUGHES RD, TORQUAY QLD
4655

SCHOOL CONTACT DETAILS

Phone: (07) 4125 1220

Fax: (07) 4125 1882

Email: ptorugay@bne.catholic.edu.au

Website: www.staroftheseaqld.edu.au

SCHOOL CONTACT PERSONNEL

Principal: Mr Liam Dougherty

APRE: Mrs Teresa Jirasek

Support Teacher (IE): Mrs Marg Blomeley

Guidance Counsellor: Mr Clinton Davies

Brisbane Catholic
Education Centre

Enrolment Application

and

Support Procedures

for

Students requiring Significant

Educational Adjustments

Introduction and Rationale

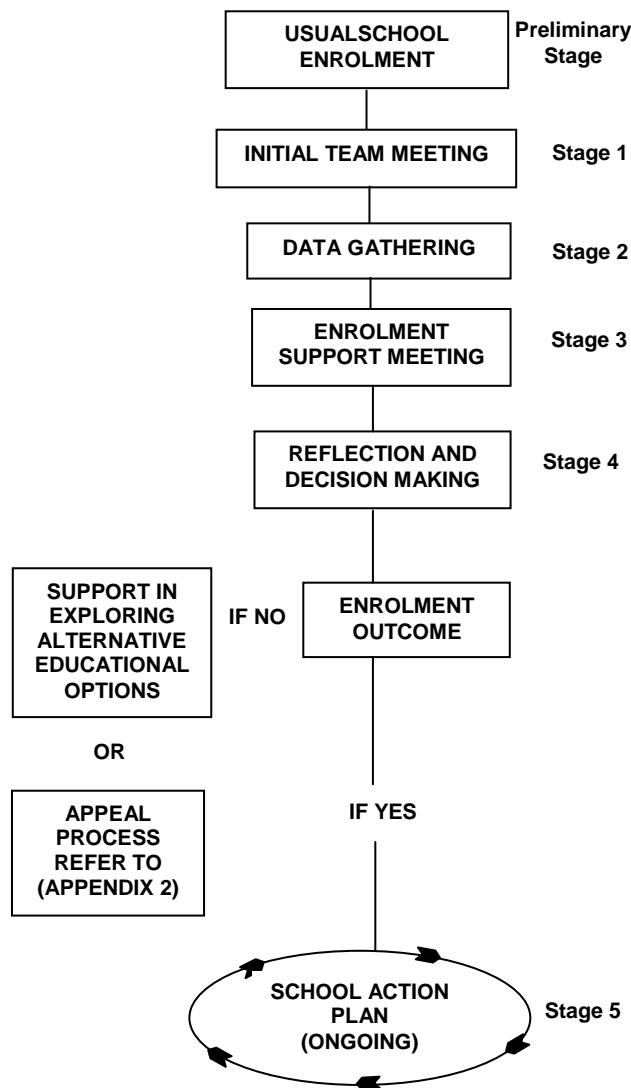
The Enrolment Application and Support Procedures for Students requiring Significant Educational Adjustments operates within the Policy – Students with Disabilities for Brisbane Catholic Education schools. This policy statement, consistent with the Vision Statement and Strategic Renewal Framework 2012-2016, reflects the ongoing commitment of Brisbane Catholic Education to the incorporation of inclusive practices in schools and is guided by the principles of justice as reflected with Church, education and legal areas. The enrolment of a student requiring significant educational adjustments is the concern of the whole school community within the church.

The process seeks to reveal and clarify the characteristics of the learner, and to assess the relevant adjustments for accessing the learning and the implications of these for the school, the family and the student.

A partnership approach is foundational to this process and leads to an appropriate response to the student's educational needs. The enrolment application and support procedures are used when it is considered likely that significant educational adjustments will be needed to support a student's initial enrolment and/or for ongoing service provision.



ENROLMENT APPLICATION AND SUPPORT PROCEDURES For Students requiring Significant Educational Adjustments



Preliminary Stage

- Make Application for Enrolment



Stage 1 Parent Meeting

- **Student Enrolment Team meeting preparation**
- **Partnership Formed**



Stage 2 Data Gathering

- **Observe/Collect Data**
- **Explore Needs**



Stage 3 Enrolment Support Meeting

- **Examine Implications**
- **Partnership Strengthened**



Stage 4 Reflection &

Decision Making

- **Principal Makes Decision**
- **Informs Relevant Others**



Stage 5 School Action Plan

- **Plan Action as Necessary**
- **Ongoing program monitoring & Review of adjustments**
- **Returning to Stage 2 (if necessary)**

